



Machine Edition Uninstall Checklist

Introduction:

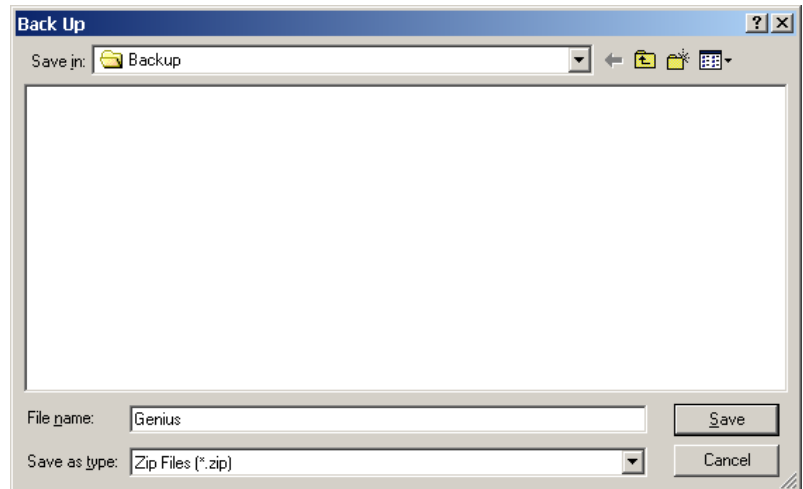
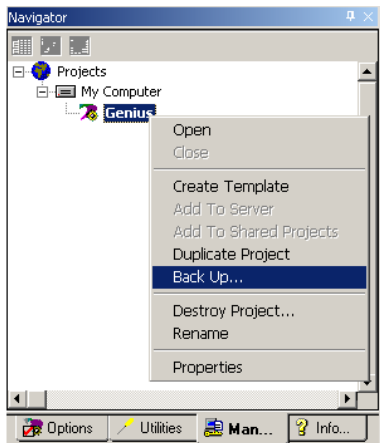
In some instances, your installation of Machine Edition may be corrupted to the point where you need to re-install Machine Edition. This document will walk you through backing up your "Toolchest" drawers and Project(s) in 2 different ways and contain full uninstallation steps.

NOTE: Machine Edition Installation folders differ depending on the version of Machine Edition. If you originally installed a version older than 5.50 build 3655, the install folder is named C:\Program Files\CIMPLICITY MACHINE EDITION. If you originally installed a version newer than 5.50 build 3655 the install folder is named C:\Program Files\GE Fanuc\PROFICY MACHINE EDITION.

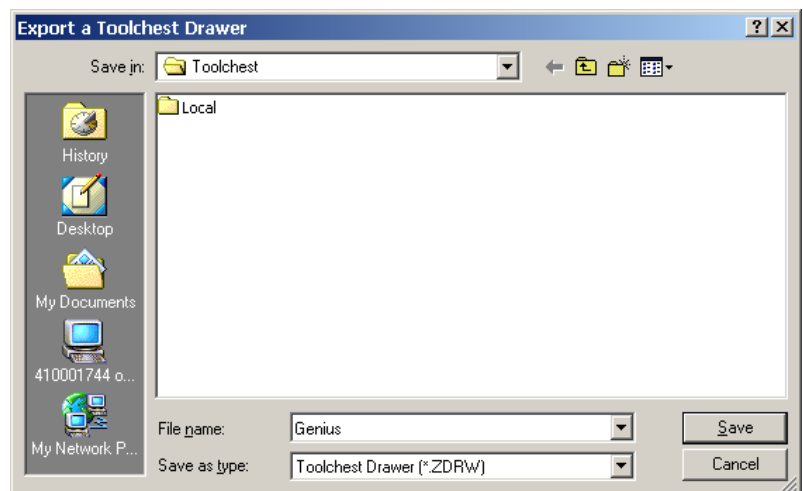
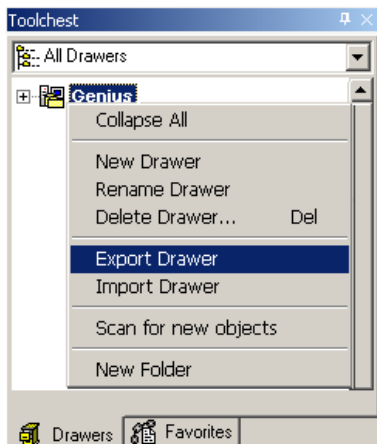
Step by Step Instructions

Make a backup of all of your projects and any custom “Toolchest”  drawers which you may have created. Backup the projects to a location other than the Machine Edition install directory.

Backing up a project:



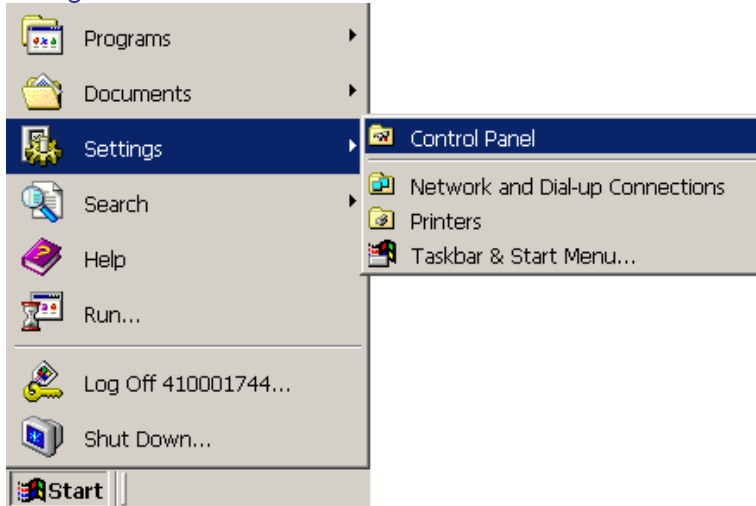
Backing up a “Toolchest”  drawer:



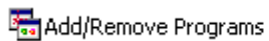
The second way to backup your projects and “Toolchest” drawers is to backup the contents of: (Backup to a alternate location than the install)

C:\Program Files\GE Fanuc\Proficy Machine Edition\SecurWORX\Local\FrameworkX
(previous to 5.50 build 3655 C:\Program Files\Cimlicity Machine Edition\SecurWORX\FrameworkX\local\frameworkx)
C:\Program Files\GE Fanuc\Toolchest
(previous to 5.50 build 3655 C:\Program Files\Cimlicity Machine Edition\Toolchest)

Navigate to the Windows "Control Panel"



Choose "Add/Remove Programs"

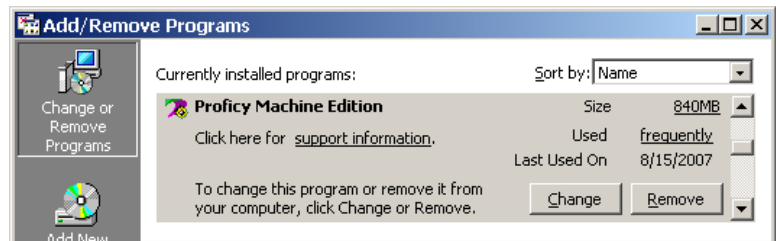


Add/Remove Programs Installs and removes programs and Windows components or

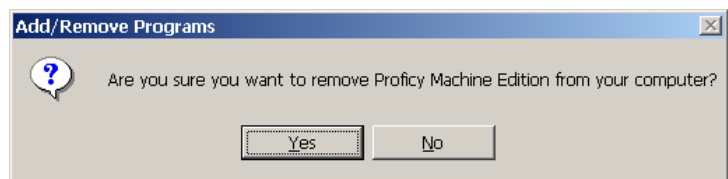


Add/Remove Programs

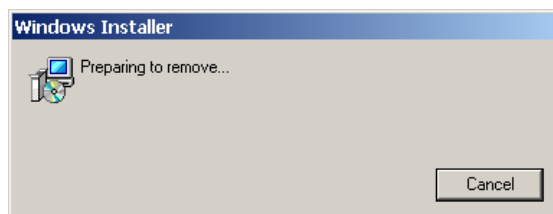
Then choose the Machine Edition from the list and click remove.



Choose yes to the removal of Machine Edition.



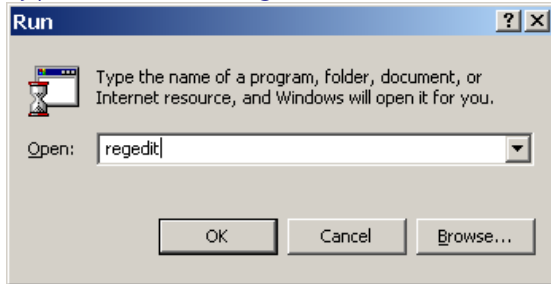
Windows installer will remove the Machine Edition.



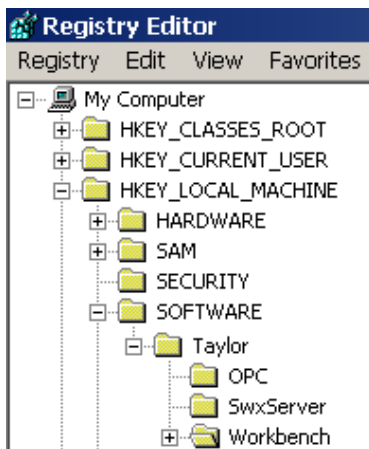
After the Windows Installer has finished uninstalling, go to “Start”  and choose “Run” .

WARNING: Using Registry Editor incorrectly can cause serious, system wide problems that may require you to reinstall Windows to correct them. Do not go beyond the scope of the steps outlined in this document. Consider making a backup of the registry before continuing. Use this tool at your own risk.

Type the word “Regedit”. And click on “OK”.

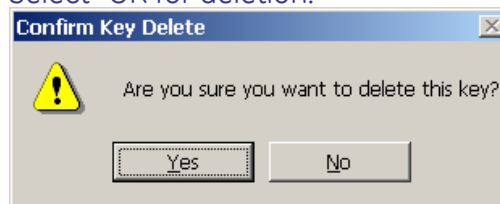


There are typically 2 registry keys to be deleted.

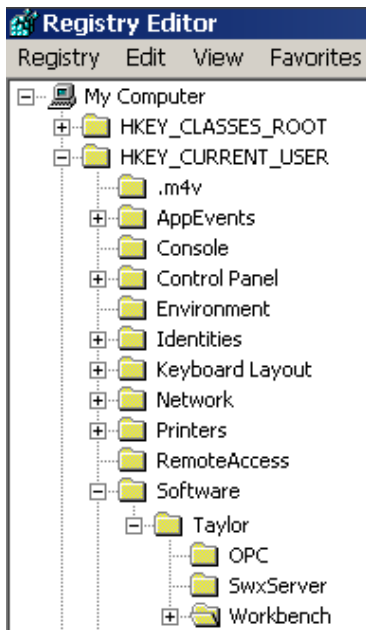


Navigate to “HKEY_LOCAL_MACHINE” | SOFTWARE | TAYLOR”. Expand “TAYLOR” then right click on “Workbench” and delete.

Select “OK for deletion.

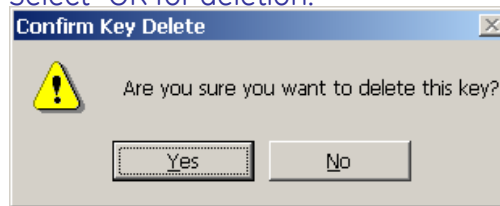


There also may or may not be another key to delete.



Navigate to "HKEY_CURRENT_USER" | SOFTWARE | TAYLOR". Expand "TAYLOR" then right click on "Workbench" and delete.

Select "OK for deletion."



Finally, delete the installation folder that Machine Edition was installed to.

For 5.50 build 3655 or newer:

C:\Program Files\GE Fanuc\Proficy Machine Edition

For 5.50 build 3655 or older:

C:\Program Files\Cimplicity Machine Edition

NOTE: If there are problems deleting the install folder due to services running, please take note of the services mentioned. Open C:\WINNT\system32\services.msc and stop the noted services.

Reboot you personal computer.

Reinstall Machine Edition.