

# How to Get the Application Server and Microsoft SQL Versions from the Galaxy Backup File

Legacy Number#	1009
Doc ID:	TN614
Version:	2.0
Last Modified:	07/01/2015

### SUMMARY

This *Tech Note* describes getting and viewing the Application Server version and Microsoft SQL Server version from the Galaxy backup file.

### Application Versions

- Application Server 2.1 and later (includes 4.1)

### ACTION

1. Rename the Galaxy backup .cab to **Galaxybackup.zip**.
2. Extract **Galaxybackup.zip**.

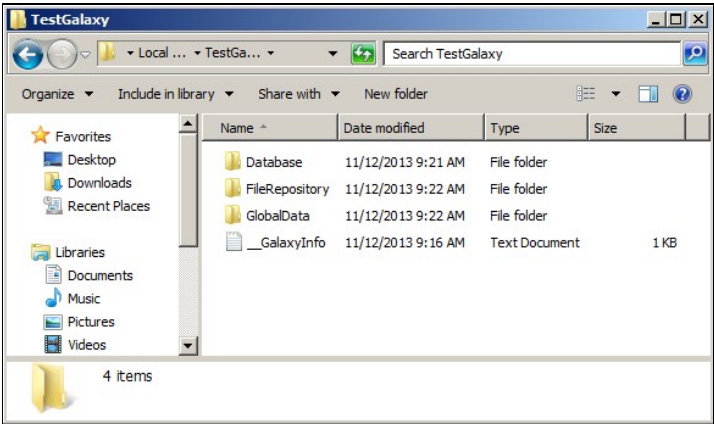


Figure 1: Extracted Galaxybackup.zip

3. From the extracted folder open the **GalaxyInfo.txt** file.

You can find the **CdiVersion** element that refers to the Application server version.

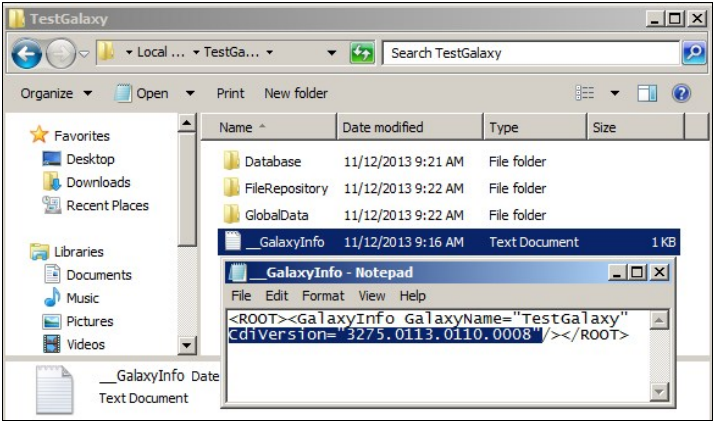


Figure 2: GalaxyInfo.txt

The following list provides the CdiVersion for each Application Server version:

[IAS 2.1]  
2.1 Released 2559.1144.0.0  
2.1 Patch01 2559.1144.66.12  
2.1 Patch02 2559.1144.77.14

[WAS 3.0]  
3.0 Released 2859.1293.0.0  
3.0 Patch01 2859.1293.24.2  
3.0 Patch02 2859.1293.53.4  
3.0 Patch03 2859.1293.70.5  
3.0SP1 2859.1293.95.15  
3.0SP2 2859.1293.239.40

[WAS 3.1]  
3.1 3132.57.0.0  
3.1SP1 3132.57.24.6  
3.1SP2 3132.57.91.24  
3.1SP2P01 3132.57.103.28  
3.1SP3 3132.57.119.34  
3.1SP3P01 3132.57.160.38

[ASP 3.5]  
3.5 3275.0113.0000.0000  
3.5 Patch01 3275.113.110.8

[ASP 3.6]  
3.6 3388.0127.0000.0000  
3.6 Patch01 3388.0127.0126.0006  
3.6 Patch02 3388.0127.0212.0011  
3.6 Patch03 3388.0127.0300.0012

[ASP 4.0]  
4.0 3502.0148.0000.0000  
4.0 Patch 01 3509.0148.0140.0007

[ASP 4.1]  
3735.0233.0000.0000  
4.1 Patch 01 3735.0233.0223.0032

**Note:** You can use the same **CdiVersion** list to verify a PC's installation by checking the wwCdi.dll version (Figure 3 below).

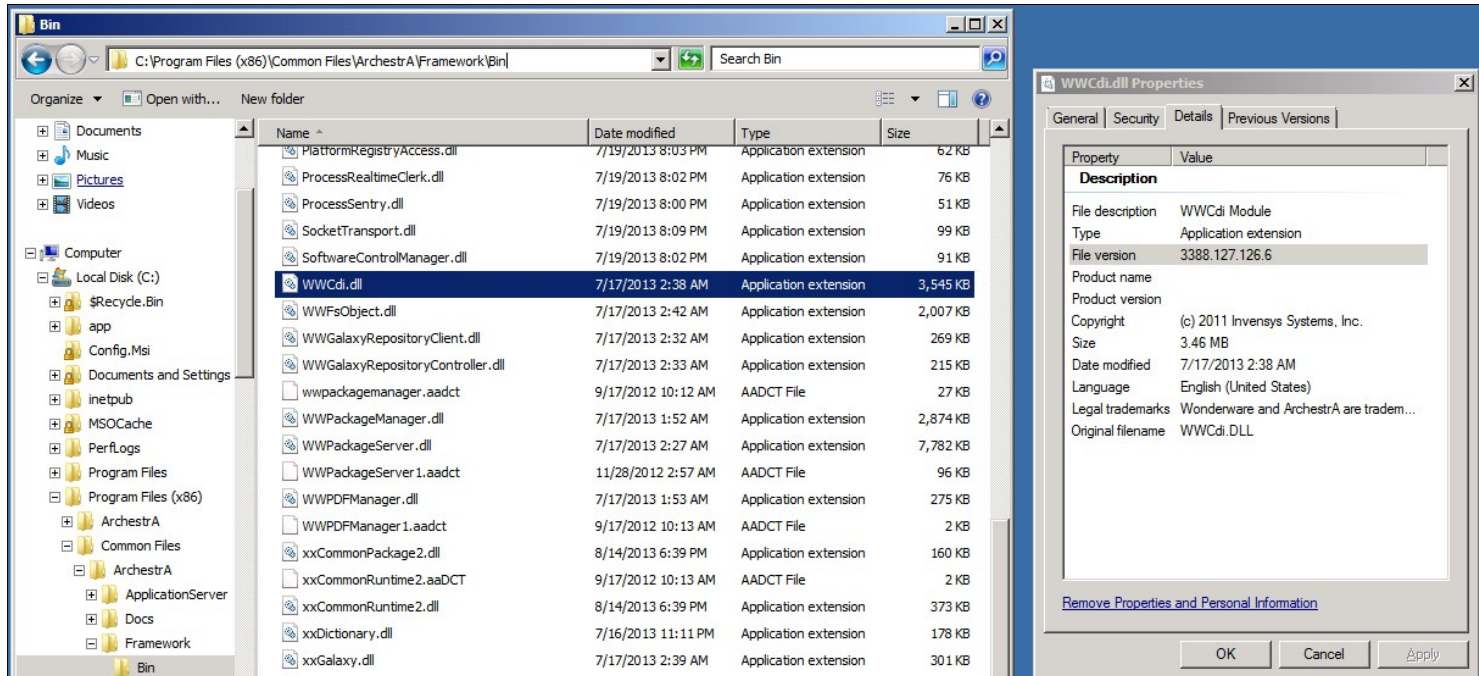


Figure 3: WWCdi.dll Properties Includes Version

### How to Get SQL Server Backup Details from the Galaxy Backup

You can get the SQL Server backup details from the Galaxy backup file using The RESTORE HEADERONLY option. This option allows you to see the backup header information for all backups on a particular backup device. In most cases each backup you create has only one backup stored in a physical file, so you will probably only see one header record. If you had multiple backups in one file you would see the information for each backup.

1. Change the Galaxy backup .cab name to Galaxybackup.zip.
2. Extract Galaxybackup.zip.

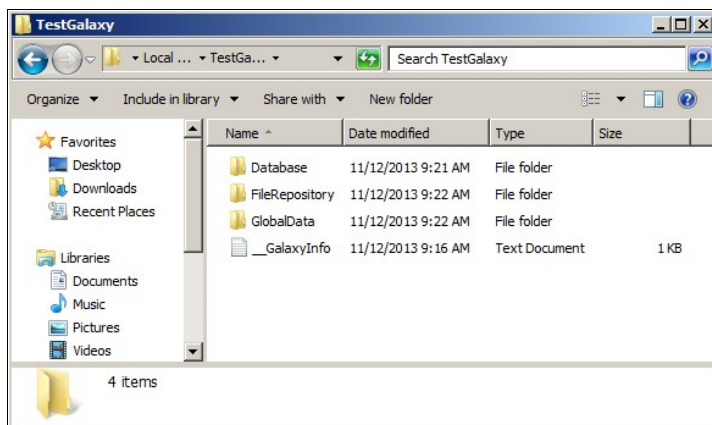


Figure 4: Extract GalaxyBackup.zip

3. Copy database.backup from folder database to the C:\ drive.

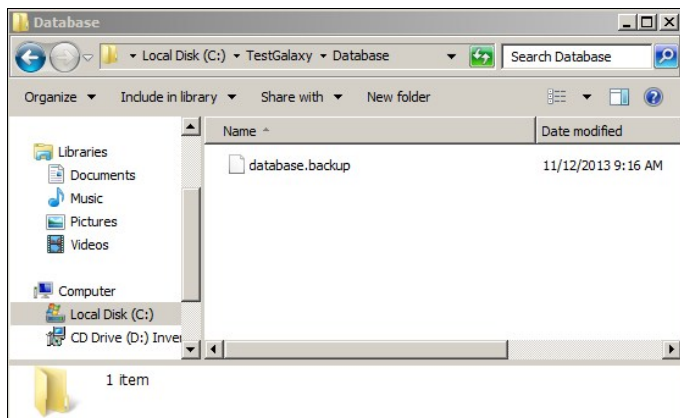


Figure 5: Copy database.backup to C:\ Drive

4. Open SQL server Management Studio from the Start menu.
5. Get header only information from a full backup by running the following SQL statement.

```
RESTORE HEADERONLY FROM DISK = 'C:\database.backup'
GO
```

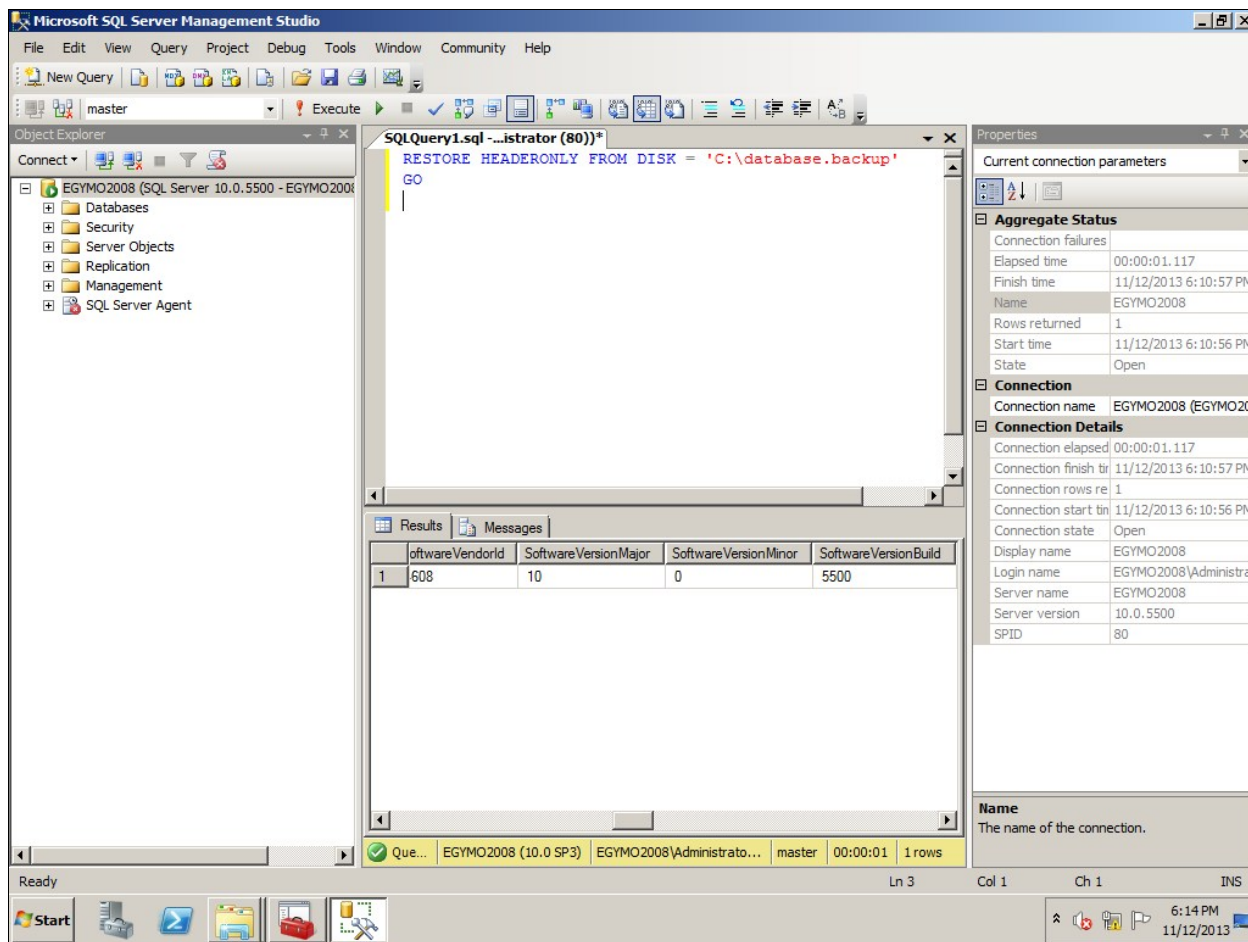


Figure 6: SQL Query

You can see Microsoft SQL Server versions from the following three columns.

- SoftwareVersionMajor.
- SoftwareVersionMinor.
- SoftwareVersionBuild.

In this example the version is **10.0.5500**, which represents Microsoft SQL server 2008 SP3.

#### SUPPORTING INFORMATION

The following table represents version numbers for all Microsoft SQL servers.

	RTM (Gold, no SP)	SP1	SP2	SP3	SP4
<b>SQL Server 2012</b> codename Denali	11.00.2100.60	11.00.3000			
<b>SQL Server 2008 R2</b> codename Kilimanjaro	10.50.1600.1	10.50.2500	10.50.4000		
<b>SQL Server 2008</b> codename Katmai	10.00.1600.22	10.00.2531	10.00.4000	10.00.5500	
<b>SQL Server 2005</b> codename Yukon	9.00.1399.06	9.00.2047	9.00.3042	9.00.4035	9.00.5000
<b>SQL Server 2000</b> codename Shiloh	8.00.194	8.00.384	8.00.532	8.00.760	8.00.2039
<b>SQL Server 7.0</b> codename Sphinx	7.00.623	7.00.699	7.00.842	7.00.961	7.00.1063

#### Author Notes

Created: January 2014

Author: M. Salah